



**Built to Lead**

# **Protecting Our Drinking Water**

# Protecting Our Drinking Water





# Protecting New York's environment is a top priority.





**The Native American proverb  
is true:**

**“We don’t inherit the  
land from our parents.  
We are borrowing it  
from our children.”**





This year, I am proposing we increase the Environmental Protection Fund to the highest level in history: **\$300 million.**





I am proposing a \$100 million increase for the Water Infrastructure Improvement Act to bring total State investment to **\$300 million.**



**We will eliminate all  
use of coal in New York  
State by 2020.**



And we are mandating that  
**50%** of New York's energy  
must come from renewables  
by 2030.





**Long Island is especially sensitive to environmental issues.**



**County Executive Bellone  
has made water quality  
and water treatment a  
top priority.**





We have invested  
**\$383 million** for a  
sewer system in  
Suffolk County.



In Nassau, we're investing in a **\$800 million plan** to partner with the county for the improvement of wastewater treatment.





**Post-Superstorm Sandy, we have invested billions in hardening our utilities and fortifying our shorefront.**





We have committed **\$2 million** to launch the Stony Brook Center for Clean Water Technology, which will research water quality issues in coastal communities.



STONY BROOK  
STATE UNIVERSITY OF NEW YORK



A main environmental issue that has emerged of national significance is the **quality of drinking water.**

- Long-term effects of historic industrial pollution
- Aging infrastructure
- Extreme weather



**New York is no exception – communities across the state are understandably concerned.**



**Town of Orleans**



**Hoosick Falls**



**Right here on Long Island, the long-term sustainability of our water systems is being questioned:**

- **Northrop Grumman plume**
- **Mulch facility runoff**
- **Saltwater intrusion**



**New York is taking lead  
on water quality.**

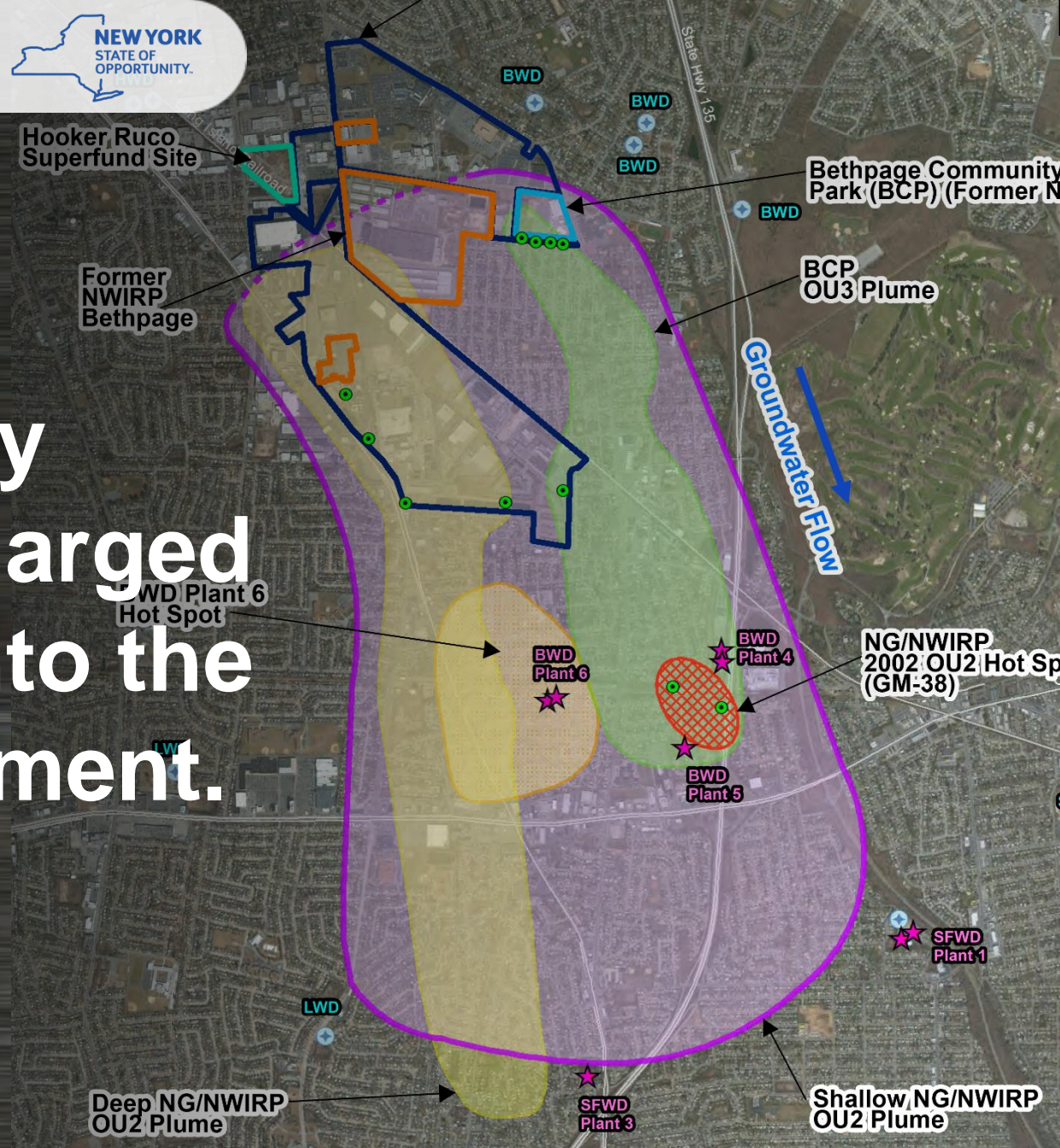
**We have a 3-part action plan  
for Long Island.**



# Protecting Our Drinking Water



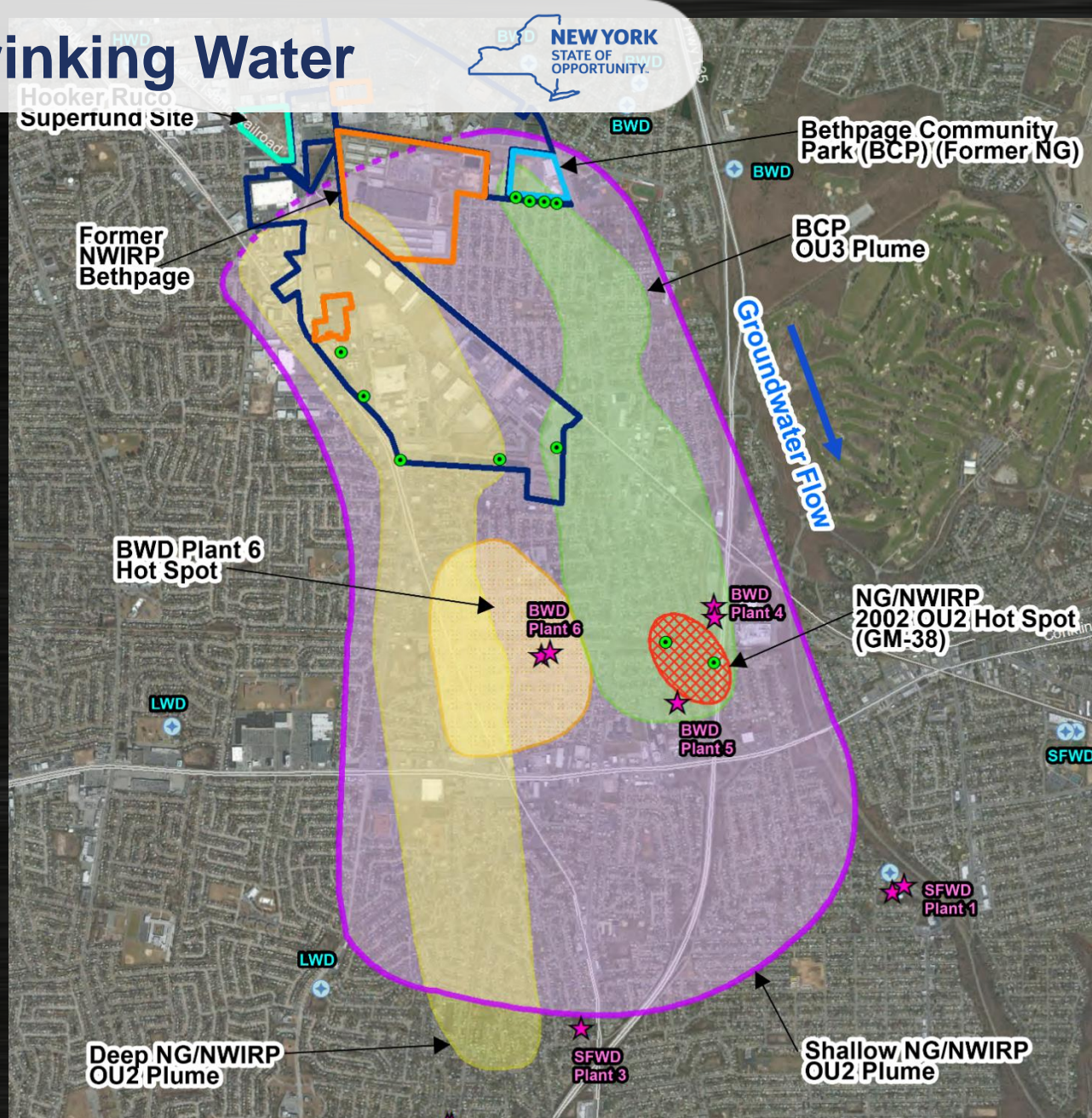
**1. In Nassau County, Northrop Grumman manufactured military equipment and discharged industrial solvents into the surrounding environment.**





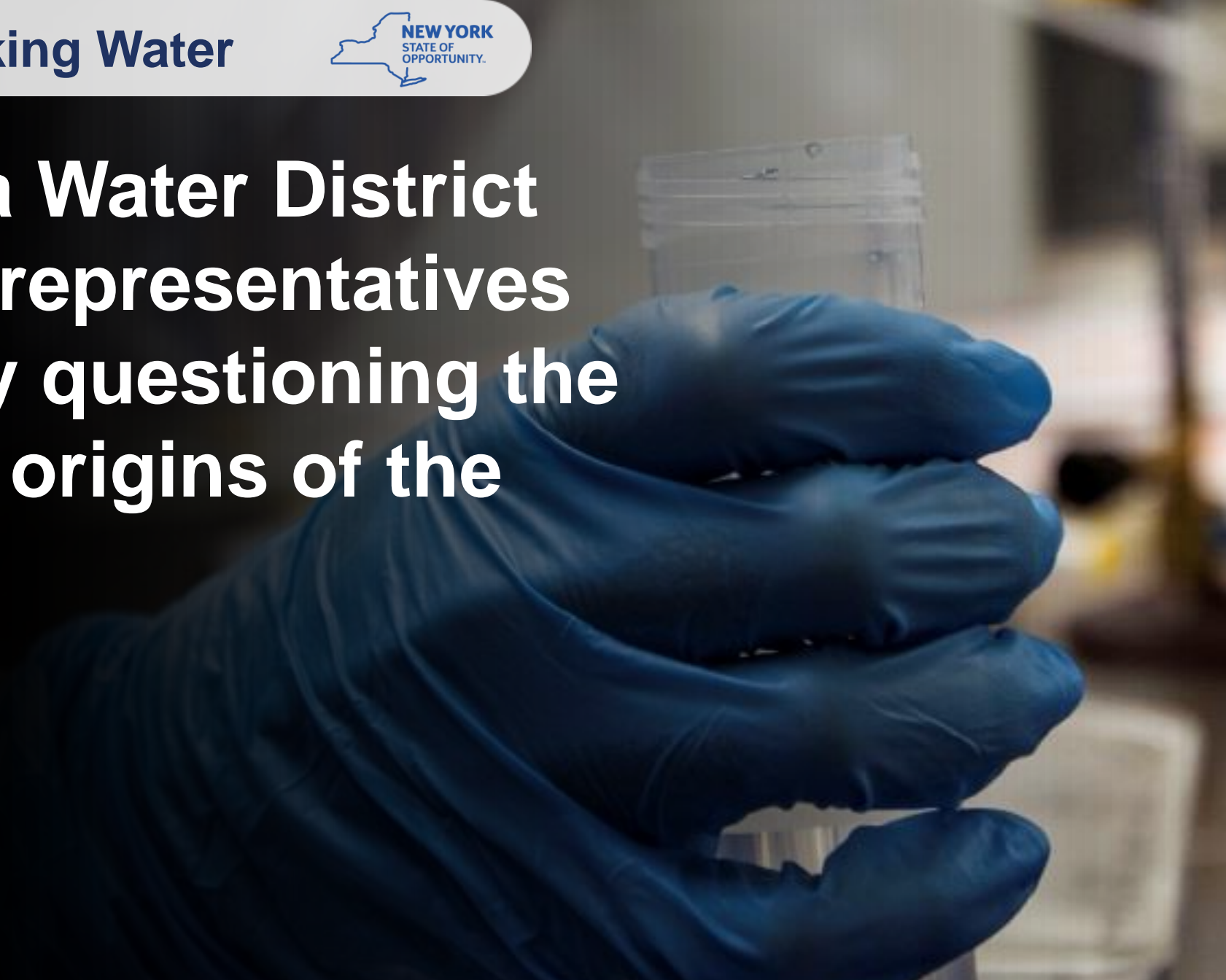
# Protecting Our Drinking Water

## Northrop Grumman Plume





**Massapequa Water District  
and elected representatives  
are rightfully questioning the  
content and origins of the  
plume.**



**The federal government was reluctant to allow testing of the groundwater.**

**The State of New York has its own jurisdiction over the affected area and we will undertake testing directly.**



**Today we will commence independent testing by an expert lab to determine the extent of toxic 1,4-Dioxane contamination in the plume, which was used in airplane manufacturing.**



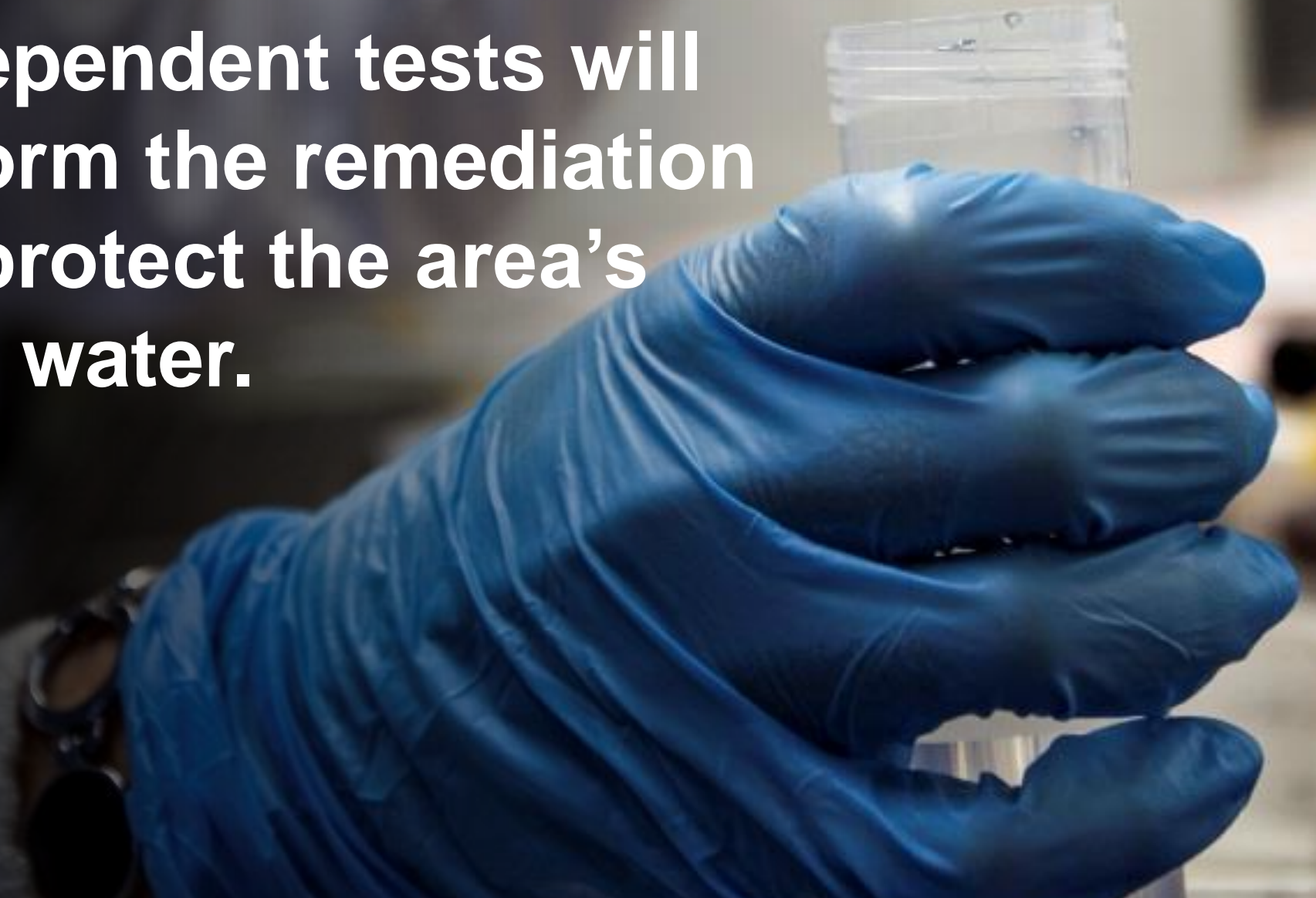
## Independent Testing of Grumman Plume:

---

- Testing for the contaminant 1,4-Dioxane.
- Testing will be done by an independent laboratory.
- The first samples will be collected today from 6 monitoring wells.
- Testing will be expanded as warranted.
- Results will be shared with water districts as soon as they are available.



**The independent tests will help inform the remediation plan to protect the area's drinking water.**





**2.** The mulch industry is vital to Long Island's economy and environment, but is also unregulated – causing runoff that endangers our water.



 **65 Compost and Mulch Facilities**



**Suffolk County studied wells around 11 mulch facilities and found elevated levels of manganese, iron and thallium.**





**We will retest mulch piles and propose the first-ever regulation of the state's mulch facilities, which may currently be contributing to groundwater contamination.**





## First-Ever Mulch Regulations Will:

---

- **Require facilities to establish water runoff management plans to protect groundwater.**
- **Place restrictions on pile size and storage to reduce the risk of fires, odor and dust.**
- **Require monitoring wells at some facilities to ensure groundwater is not being contaminated.**

**3.** Today we are announcing a comprehensive study of Long Island's groundwater and aquifer to determine possible threats to the groundwater integrity, including chemical contamination and saltwater intrusion.



**We will conduct the study in concert with the U.S. Geological Survey, Nassau and Suffolk Counties. The State will fund the cost, estimated to be \$6 million.**

## Groundwater Study:

---

- **Study will identify exactly where and how saltwater and other contaminants are mixing with our freshwater.**
- **Using this information, we will create a blueprint for understanding and managing this precious resource.**



**We know that drinking water quality issues can arise across New York State – and we must be ready to respond swiftly.**



We are creating the  
**Statewide Water Quality  
Rapid Response Team** to  
investigate and address  
water quality concerns.



## Statewide Water Quality Team Will:

---

- **Coordinate rapid response to water emergencies across New York.**
- **Establish the nation's leading clean drinking water program to address both regulated and unregulated contaminants in public and private drinking water systems.**
- **Present a comprehensive action plan to the Governor.**

## The Statewide Water Quality Rapid Response Team will be composed of:

- **Co-Chairs: DEC Acting Commissioner Seggos & DOH Commissioner Dr. Zucker.**
- **Secretary of State.**
- **Leading officials from DAM, OGS, DHSES, HCR, ESD and EFC.**



## **In summary, we will:**

- 1. Commence testing of Northrop Grumman plume.**
- 2. Conduct additional testing and propose first-ever mulch facility regulations.**
- 3. Initiate a comprehensive groundwater study.**
- 4. Establish the Statewide Water Quality Rapid Response Team.**



**Built to Lead**

# **Protecting Our Drinking Water**





**Built to Lead**

# **Protecting Our Drinking Water**



**Built to Lead**

# **Protecting Our Drinking Water**