



ELIZABETH BRATON
Chairperson

COMMUNITY BOARD 10

CITY OF NEW YORK ♦ BOROUGH OF QUEENS
115-01 LEFFERTS BOULEVARD
SOUTH OZONE PARK, N.Y. 11420
TEL: (718) 843-4488
FAX: (718) 738-1184
E-MAIL: cb10qns@nyc.rr.com



KARYN PETERSEN
District Manager

STATEMENT TO NY STATE COMPLETE COUNT COMMISSION QUEENS COUNTY PUBLIC HEARING MAY 1, 2019

Good evening Commissioners. Thank you for coming to Queens this evening to hear our comments regarding Census 2020.

My name is Betty Braton. I am the Chairperson of Queens Community Board 10 and the content that follows represents the views of the Board as well as my own views as a representative of Community Board 10 on the Queens Borough Complete Count Committee.

As our Borough President, the Hon. Melinda Katz, says pretty much everywhere she speaks, Queens is the most diverse county in this nation. Most of us in Queens would agree that we are probably the most diverse chunk of geography in the world. Queens Community Board 10 reflects that diversity. Each year since 2007, our Board area has ranked #1 in racial diversity out of all 59 Community Boards on NYC according to the NYU Furman Center's annual *State of New York City's Housing and Neighborhoods* publication.

The chart depicted below show Community Board 10's population over a period of years.

2012	2011	2010	2009	2008	2007	2006	2005	2000
Number	Number	Number	Number	Number	Number	Number	Number	Number
133,178	132,853	122,396	125,305	140,123	138,052	124,623	124,086	127,274

Source: U.S. Census Bureau, American Community Survey 1-Year Estimates, Tables DP01 (2005), DP05 (2006, 2007, 2008, 2009, 2011, 2012); retrieved from American FactFinder; <http://factfinder2.census.gov/>; U.S. Census Bureau, Decennial Census, Table SF1-P111 (2000); retrieved from New York City Department of City Planning, Population Division (February 2002); http://www.nyc.gov/html/dco/html/census/demo_tables.shtml; U.S. Census Bureau, Decennial Census, Table SF1-P6 (2010); retrieved from New York City Department of City Planning, Population Division (14 July 2011); http://www.nyc.gov/html/dco/html/census/demo_tables_2010.shtml

What it shows is that there was a significant undercount in our district in 2010. It is very hard for anyone who deals with the issues of overcrowded schools, numerous housing units not recognized as "legal" under the NYC Building Code, and other clear signs of population growth in our district to accept that there were almost 5,000 less people in 2010 than in 2000. The annual population estimates generated by the ACS each year are most certainly closer to the true population in our district.

Community Board 10 encompasses all of zipcodes 11414, 11417, and 11420 and half of zipcode 11419. Like the rest of Queens, Community Board 10 is home to many foreign-born persons. Close to half of our residents are immigrants. Map 1 attached at the end of these comments shows those zipcodes and our district boundaries. It also shows that all but 2 of the census tracts in our district are "Hard to Count" tracts. The second map, distributed to us at one of our Complete Count meetings, shows that most of the census tracts in Queens with the lowest 2010 mail return rates are within Community Board 10 and they are generally within sections of our district where there are numerous non-building code compliant housing units and many people who are immigrants. Maps of population density promulgated by the NYC DCP

show that some of the most densely populated census tracts in southern Queens are within these same areas where there was a low mail response in 2010.

What this data says to me is that we have a job to do to insure a more accurate count of our population in 2010. To do that job more effectively, we need your assistance. We need adequate resources available to the Queens Complete Count Committee to do all of the outreach and assistance that is necessary to insure an accurate count.

- We are fully cognizant that the current political climate in our nation coupled with the possibility of a citizenship question is making our immigrant population very fearful.
- Cybersecurity is a concern since this is the first time most people will be asked to fill out census questionnaires online.
- Adequate computer resources must be available and a great deal of educational reachout via all forms of media will be necessary.
- Historically the African-American community has been undercounted. Adequate resources must be available to trusted groups to do the necessary reachout.

Your assistance is necessary to insure adequate resources are available in Queens to deliver very targeted messages to insure people actually understand and internalize “what’s in it for them” if the count actually represents our borough’s true population. People need to know, in way more than a general sense, what we lose if the count is not accurate. That specificity needs to come to our people in clear and easy to understand forms such as, for example not “we lose education money” but P.S. XXX loses A, B, and C.

Our schools need a very good census curriculum. The children may be immigrants or be the children of immigrants, but like the children of all the waves of immigrants before them they are often the family translators and often a major part of the family’s interface with anything governmental. Let’s teach them well over the course of 2019 and early 2020 to help make sure they know how to make sure their families are counted.

I have been incorporating census talking points at whatever community meetings I have been attending. I have found when I speak of specific things that are federally funded that we could lose, people listen more. We need your help in providing a cohesive message and the materials to deliver that message. Our office is reproducing and distributing materials with information as we get them, but if we are going to insure Queens is fully counted we need more and it needs to be tailored to Queens.

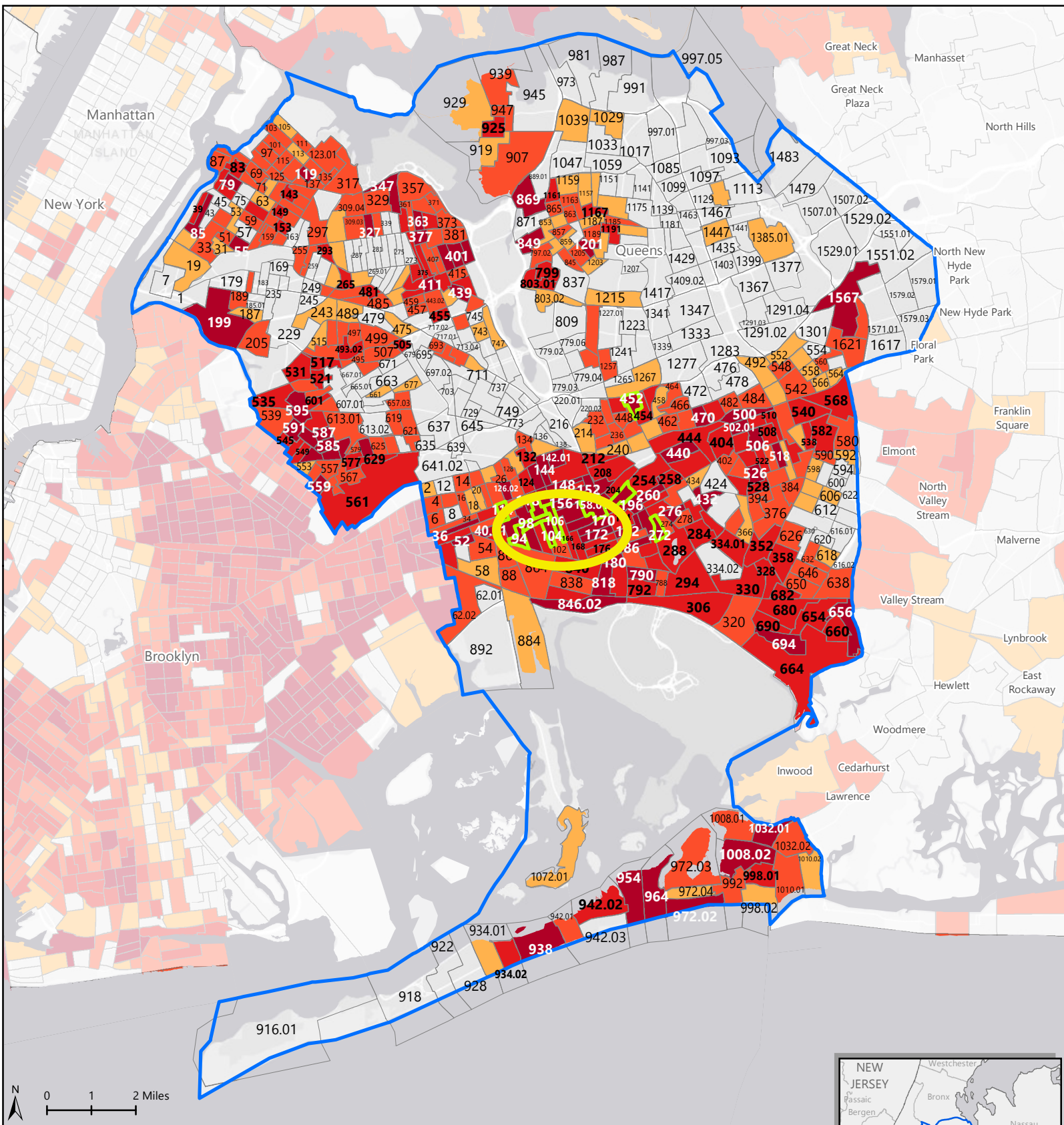
Again, thank you for coming to Queens and for listening to all of our views on how to get a fuller response to next year’s census.



JFK
Airport

Jamaica Bay

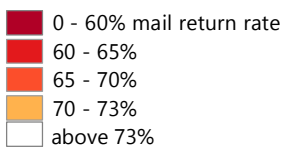
HARD-TO-COUNT CENSUS TRACTS IN QUEENS COUNTY, NEW YORK



Hardest to Count (HTC)

Tracts in the Nation

Tracts with 2010 mail return rates of 73% or less (in the bottom 20 percent of return rates nationwide) are shaded on the map.



Tracts counted using special Update/Enumerate method; they are hard-to-count but mail return rates are not applicable

Tracts with lowest mail return rate in Queens County

For more details and additional information, please visit: <https://www.CensusHardtoCountMaps2020.us>

Cartography by CUNY Graduate Center, Center for Urban Research, 2018. Data: U.S. Census Bureau; ESRI Basemap. Created: 3/30/2018

HTC 2020